

Deformable safety barrier, single sided, for ground - Containment level H2



Certified according	EN 1317-1/2
---------------------	-------------

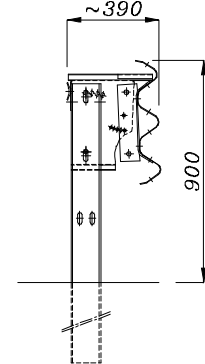
Homologation according italian D.M. 223/92	16/2002
--	---------

CHARACTERISTICS

Weight	kg/m	32,37
Height out of ground	mm	900 ± 20
Depth of fixing	mm	1040
Transversal overall dimensions	mm	390
Center to Center distance between posts	mm	2250
Suggested minimum lenght	m	108,0 + end sections ⁽¹⁾
Steel quality		S235JR
Galvanisation		EN ISO 1461

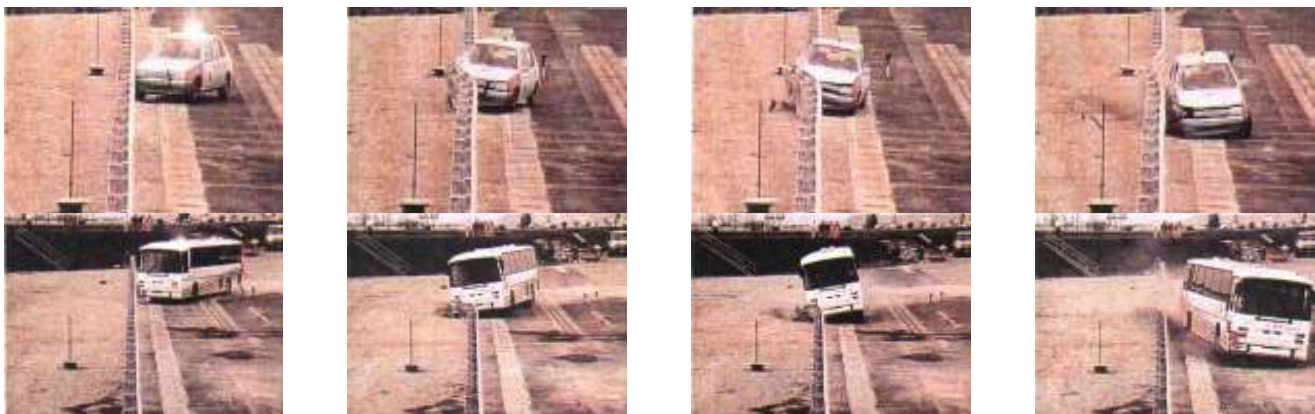
PERFORMANCES

Containment level "Lc"	kJ	284,78 ⁽²⁾	A
Acceleration Severity Index "ASI"		0,9	
Theoretical Head Impact Velocity "THIV"	km/h	22,8	
Post-impact Head Deceleration "PHD"	g	16,4	
Working Width and Class "W" (permanent Working Width ⁽³⁾)	m	Heavy vehicle	Light vehicle
		1,87 / W6 (1,66)	0,97 / W3
Maximum lateral position of the vehicle "VI" ⁽⁴⁾	m	Heavy vehicle	Light vehicle
		2,07	-
Dynamical Deflection "D" (Permanent Deflection)	m	Heavy vehicle	Light vehicle
		1,75 (1,29)	0,61 (0,30)
Vehicle Cockpit Deformation Index "VCDI"		RF0022000	



3N.TU-brl.08 dwg. 050-0616/01

- (1) When not connected to other barriers, end sections are compulsory (for start section only).
- (2) Both the light and the heavy vehicle have been contained in the carriageway, inside the CEN box, without overturning; no ejection of main components, no intrusion of elements into the passenger compartment.
- (3) It is the distance between the barrier side facing the traffic before impact and the maximum permanent lateral position of any major part of the barrier.
- (4) Values according EN 1317-1/2:1998 and proposal for revision EN 1317-1/2:2006.



TEST REPORTS

Report N°	Test field - Laboratory	Date of the crash-test	Vehicle	Vehicle Mass (kg)	Impact speed (km/h)	Impact angle
TUB/BSI-27/392	L.I.E.R. – Lyon (F)	10.04.00	Car	895	102,2	20,1°
TUB/BSI-28/393A	L.I.E.R. – Lyon (F)	11.04.00	Bus	12.700	70,5	20,0°

