

## Deformable vehicle parapet, single sided Containment level H3



Certified according	EN 1317-1/2
---------------------	-------------

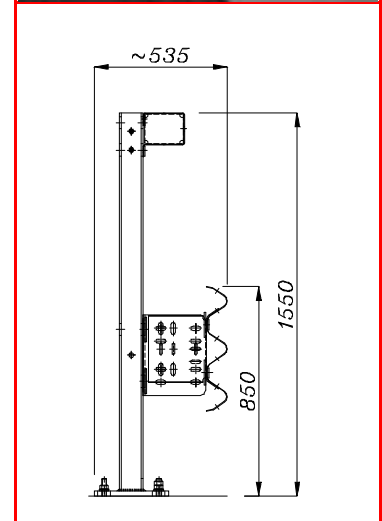
Homologation according italian D.M. 223/92	In progress
--	-------------

### CHARACTERISTICS

Weight	kg/m	67,40
Height out of ground	mm	1550 ± 20
Depth of fixing	mm	-
Transversal overall dimensions	mm	535
Center to Center distance between posts	mm	1500
Suggested minimum lenght	m	76,5 + end sections <sup>(1)</sup>
Steel quality		S235JR
Galvanisation		EN ISO 1461

### PERFORMANCES

Containment level "Lc"	kJ	470,08 <sup>(2)</sup>	<b>B</b>
Acceleration Severity Index "ASI"		1,3	
Theoretical Head Impact Velocity "THIV"	km/h	31,0	
Post-impact Head Deceleration "PHD"	g	13,0	
Working Width and Class "W" (permanent Working Width <sup>(3)</sup> )	m	Heavy vehicle	Light vehicle
		1,40 / W5 (1,33)	0,60 / W1
Maximum lateral position of the vehicle "VI" <sup>(4)</sup>	m	Heavy vehicle	Light vehicle
		1,70	-
Dynamical Deflection "D" (Permanent Deflection)	m	Heavy vehicle	Light vehicle
		1,00 (0,92)	0,20 (0,16)
Vehicle Cockpit Deformation Index "VCDI"		RS0001000	



3N.TU-bpl.37

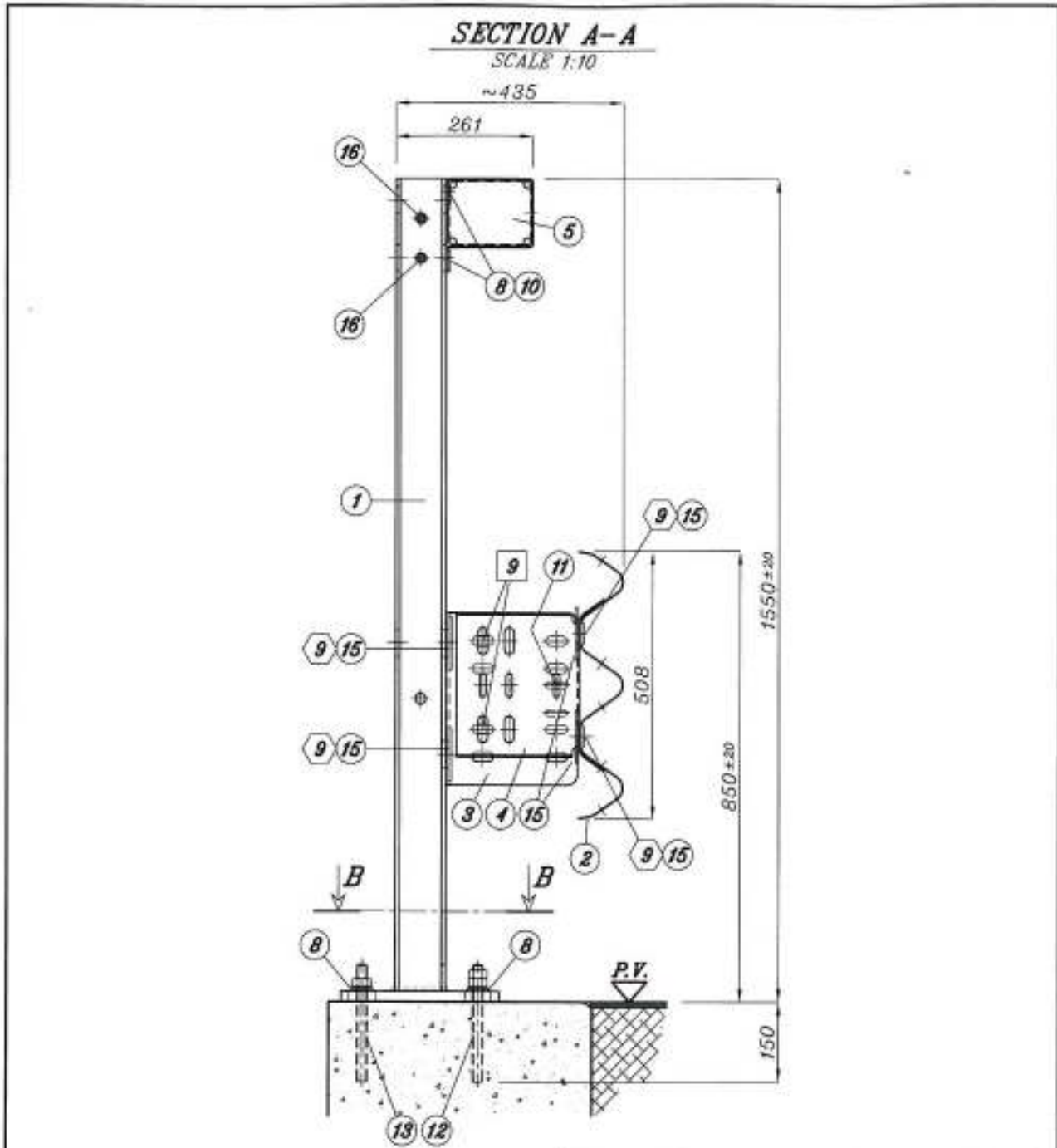
- (1) When not connected to other barriers, end sections are compulsory (both for start and end section).
- (2) Both the light and the heavy vehicle have been contained in the carriageway, inside the CEN box, without overturning; no ejection of main components, no intrusion of elements into the passenger compartment.
- (3) It is the distance between the barrier side facing the traffic before impact and the maximum permanent lateral position of any major part of the barrier.
- (4) Values according EN 1317-1/2:1998 and proposal for revision EN 1317-1/2:2006.



### TEST REPORTS

Report N°	Test field - Laboratory	Date of the crash-test	Vehicle	Vehicle Mass (kg)	Impact speed (km/h)	Impact angle
TUB/BSI-99/960	L.I.E.R. – Lyon (F)	06.10.05	Car	904	101,1	19,9°
TUB/BSI-98/959	L.I.E.R. – Lyon (F)	05.10.05	Rigid HGV	15.570	81,8	20,0°

Deformable vehicle parapet, single sided  
Containment level H3



MODIFIED 13/09/07  
MODIFIED 05/10/05  
MODIFIED 20/09/05  
MODIFIED 30/08/05

NOTE:  
For section B-B see dwg. 050-0968/03



C.so Torino, 295 - 14100 Asti (Italia)  
Tel +390141418411 - Fax +390141211373  
P.O. BOX 201

www.tubosider.com  
E-Mail utecnico@tubosider.it

CUSTOMER: /  
SITE: /  
SUBJECT:  
DEFORMABLE VEHICLE PARAPET, SINGLE SIDED  
(SECTION A-A)  
CONTAINMENT LEVEL H3

Scale  
1:10

Date  
13/07/05

Order n°.  
/

Date Order  
/

TOLERANCE ±3% Designer M. Cucchielli Draughtsman [Signature] Approval [Signature] Deg n° 050-0967/03uk

3N.TU-bpl.37 dwg. 050-0967/03

# Deformable vehicle parapet, single sided Containment level H3

