

Deformable safety barrier, single sided, for ground - Containment level H3



Certified according	EN 1317-1/2
---------------------	-------------

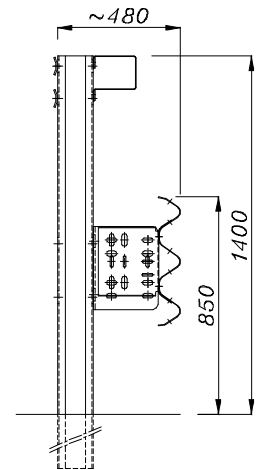
Homologation according italian D.M. 223/92	108/2007
--	----------

CHARACTERISTICS

Weight	kg/m	60,58
Height out of ground	mm	1400 ± 30
Depth of fixing	mm	1000
Transversal overall dimensions	mm	480
Center to Center distance between posts	mm	1500
Suggested minimum lenght	m	82,5 + end sections ⁽¹⁾
Steel quality		S235JR
Galvanisation		EN ISO 1461

PERFORMANCES

Containment level "Lc"	kJ	475,93 ⁽²⁾	A
Acceleration Severity Index "ASI"		1,0	
Theoretical Head Impact Velocity "THIV"	km/h	24,0	
Post-impact Head Deceleration "PHD"	g	7,0	
Working Width and Class "W" (permanent Working Width ⁽³⁾)	m	Heavy vehicle	Light vehicle
		1,40 / W5 (1,39)	1,40 / W5
Maximum lateral position of the vehicle "VI" ⁽⁴⁾	m	Heavy vehicle	Light vehicle
		2,50	-
Dynamical Deflection "D" (Permanent Deflection)	m	Heavy vehicle	Light vehicle
		1,10 (1,07)	0,80 (0,66)
Vehicle Cockpit Deformation Index "VCDI"		LS0000000	



3N.TU-brl.30 dwg. 050-0880/02

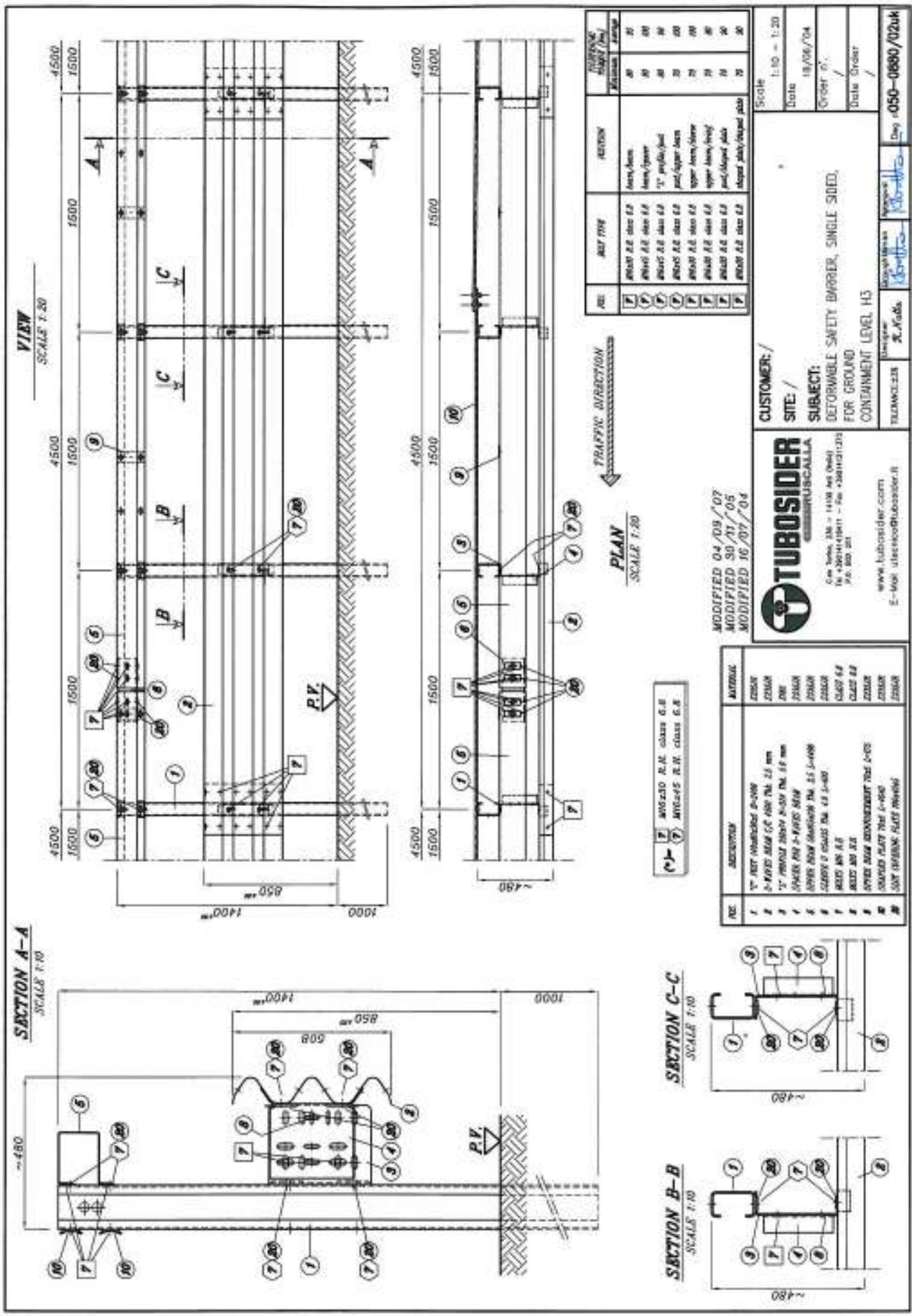
- (1) When not connected to other barriers, end sections are compulsory (both for start and end section).
 (2) Both the light and the heavy vehicle have been contained in the carriageway, inside the CEN box, without overturning; no ejection of main components, no intrusion of elements into the passenger compartment.
 (3) It is the distance between the barrier side facing the traffic before impact and the maximum permanent lateral position of any major part of the barrier.
 (4) Values according EN 1317-1/2:1998 and proposal for revision EN 1317-1/2:2006.



TEST REPORTS

Report N°	Test field - Laboratory	Date of the crash-test	Vehicle	Vehicle Mass (kg)	Impact speed (km/h)	Impact angle
TUB/BSI-86/846	L.I.E.R. – Lyon (F)	26.07.04	Car	874	101,7	20,0°
TUB/BSI-84/844	L.I.E.R. – Lyon (F)	22.07.04	Rigid HGV	15.660	80,5	20,0°

Deformable safety barrier, single sided, for ground - Containment level H3



DEL.	DEL. FINE	REVISION	REVISION Misure (mm)
1	PROV. R.E. class G.R.	Acqu. Acq.	30
2	PROV. R.E. class G.R.	Acqu. Acq.	30
3	PROV. R.E. class G.R.	1" profile/quad	30
4	PROV. R.E. class G.R.	post/coppia Acq.	30
5	PROV. R.E. class G.R.	upper Acq./lower	30
6	PROV. R.E. class G.R.	upper Acq./lower	30
7	PROV. R.E. class G.R.	post/coppia Acq.	30
8	PROV. R.E. class G.R.	Acqu. Acq./Acqu. Acq.	30

Scale 1:10 = 1:20
 Date 18/06/04
 Order n. /
 Date Order /

CUSTOMER: /
SITE: /
SUBJECT: DEFORMABLE SAFETY BARRIER, SINGLE SIDED,
 FOR GROUND - CONTAINMENT LEVEL H3

TUBOSIDER
 CRUSCALLA
 Via Sesto, 28 - 14100 Asti (Asti)
 Tel. 0111 - 0111 - Fax 0111/111121
 P.I. 001201
 www.tubosider.com
 E-mail: tubosider@tubosider.it

MODIFIED 04/09/07
 MODIFIED 30/11/05
 MODIFIED 16/07/04

DEL.	REVISION	REVISION
1	PROV. R.E. class G.R.	Acqu. Acq.
2	PROV. R.E. class G.R.	Acqu. Acq.

DEL.	REVISION	REVISION
1	1" POST Horizontal 4-100	Acqu. Acq.
2	1" RIVET 20x1 4-100 T.M. 2.5 mm	Acqu. Acq.
3	1" RIVET 20x1 4-100 T.M. 1.6 mm	Acqu. Acq.
4	SPRINGS 20x 4-100 NEW	Acqu. Acq.
5	SPRINGS 20x 4-100 NEW	Acqu. Acq.
6	COUPLER 7 CLASS T.M. 4.5 4-100	Acqu. Acq.
7	ACQ. 40 4.5	Acqu. Acq.
8	ACQ. 40 4.5	Acqu. Acq.
9	SPRINGS 20x 4-100	Acqu. Acq.
10	COUPLER 7 CLASS T.M. 4.5 4-100	Acqu. Acq.
11	SPRINGS 20x 4-100	Acqu. Acq.

