

## Deformable safety barrier, single sided, for ground - Containment level H3



Certified according	EN 1317-1/2
---------------------	-------------

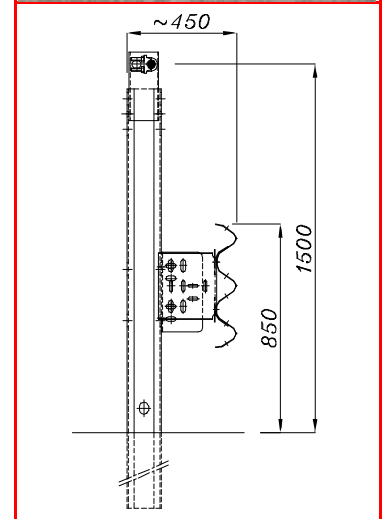
Homologation according italian D.M. 223/92	In progress
--	-------------

### CHARACTERISTICS

Weight	kg/m	47,33
Height out of ground	mm	1500 ± 30
Depth of fixing	mm	1000
Transversal overall dimensions	mm	450
Center to Center distance between posts	mm	1500
Suggested minimum lenght	m	90,0 + end sections <sup>(1)</sup>
Steel quality		S235JR
Galvanisation		EN ISO 1461

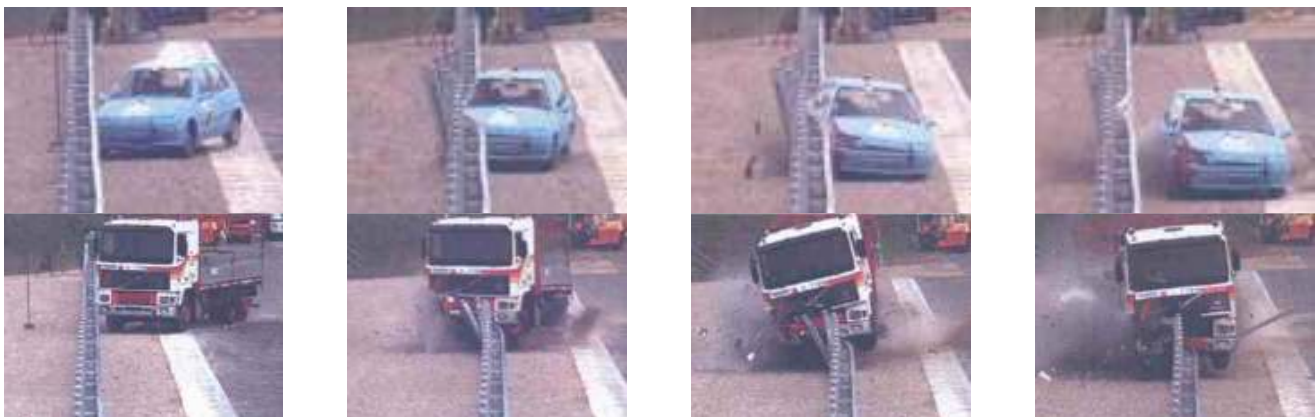
### PERFORMANCES

Containment level "Lc"	kJ	469,08 <sup>(2)</sup>	<b>Severity Index</b>  <b>A</b>
Acceleration Severity Index "ASI"		1,0	
Theoretical Head Impact Velocity "THIV"	km/h	26,0	
Post-impact Head Deceleration "PHD"	g	16,0	
Working Width and Class "W" (permanent Working Width <sup>(3)</sup> )	m	Heavy vehicle	Light vehicle
		2,00 / W6 (1,46)	0,90 / W3
Maximum lateral position of the vehicle "VI" <sup>(4)</sup>	m	Heavy vehicle	Light vehicle
		3,30	-
Dynamical Deflection "D" (Permanent Deflection)	m	Heavy vehicle	Light vehicle
		1,60 (1,03)	0,50 (0,26)
Vehicle Cockpit Deformation Index "VCDI"		RF0000000	



3N.TU-brl.50 dwg. 050-A134/01

- (1) When not connected to other barriers, end sections are compulsory (both for start and end section).
- (2) Both the light and the heavy vehicle have been contained in the carriageway, inside the CEN box, without overturning; no ejection of main components, no intrusion of elements into the passenger compartment.
- (3) It is the distance between the barrier side facing the traffic before impact and the maximum permanent lateral position of any major part of the barrier.
- (4) Values according EN 1317-1/2:1998 and proposal for revision EN 1317-1/2:2006.



### TEST REPORTS

Report N°	Test field - Laboratory	Date of the crash-test	Vehicle	Vehicle Mass (kg)	Impact speed (km/h)	Impact angle
TUB/BSI-130/1105A	L.I.E.R. – Lyon (F)	01.06.07	Car	867	102,0	19,6°
TUB/BSI-129/1104A	L.I.E.R. – Lyon (F)	31.05.07	Rigid HGV	15.730	81,3	20,0°

